

WHAT IS SCHIFFLI

- ▲ **Schiffli** is a type of lace that is embroidered on using Embroidery machine.
- ▲ **Schiffli/Embroidery** has an enhanced appearance that makes it stand apart.



COMPANY STATEMENTS



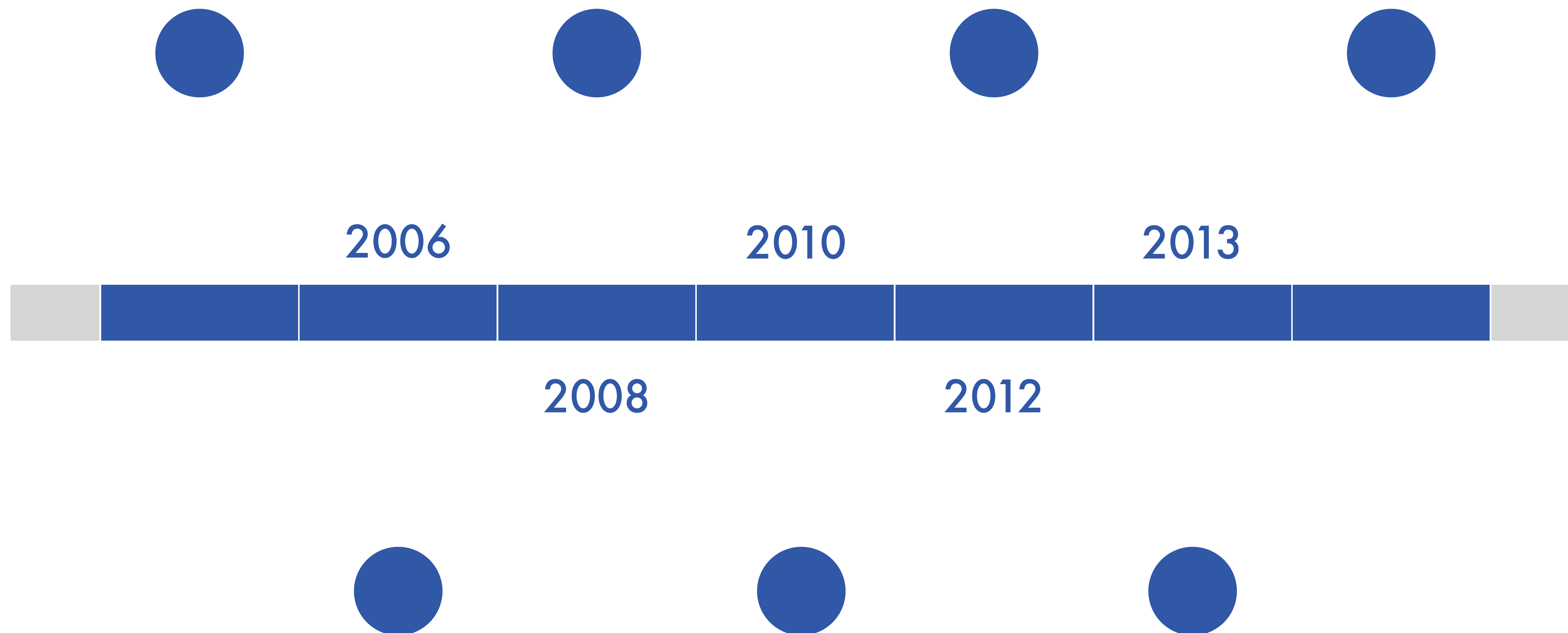
▲ Vision

To become the leading **Schiffli Solution** provider for
World's best textile brands.

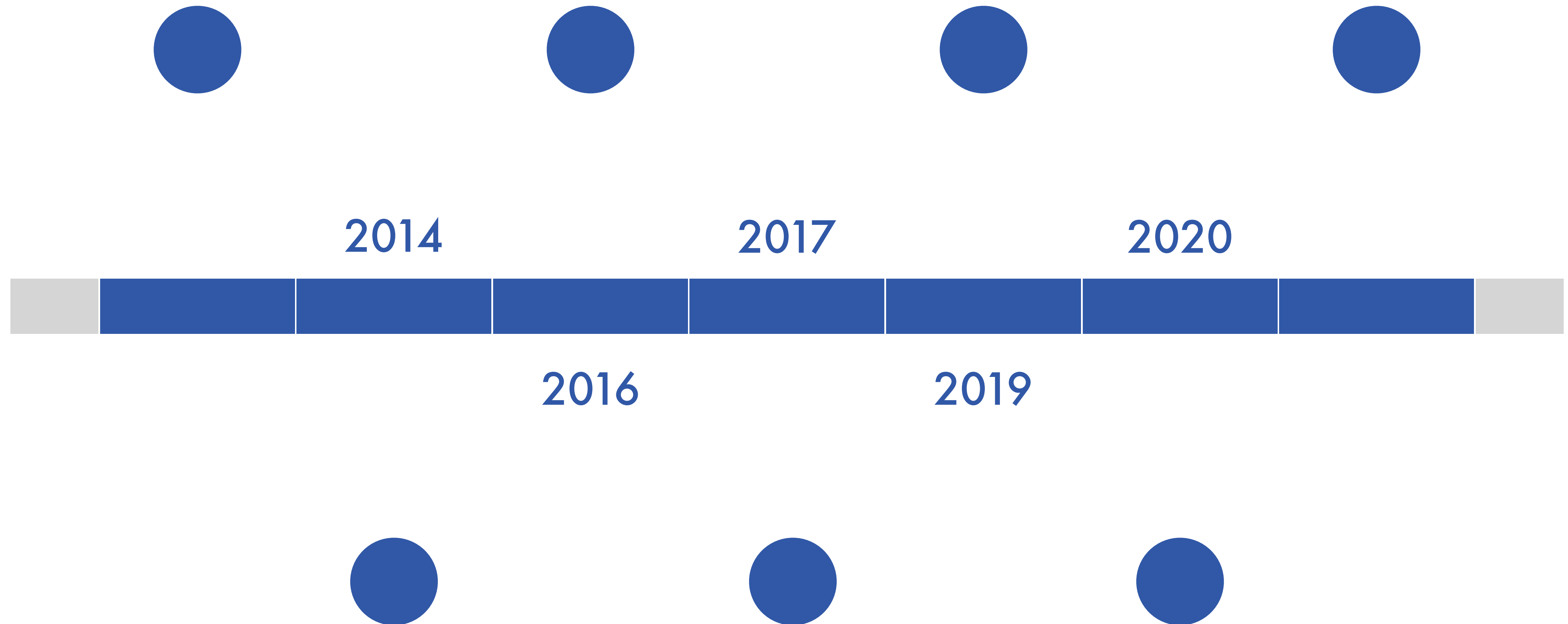
▲ Mission

To focus on our commitment towards **Quality** by continuous
investment in upgradation to World class Technology,
Team & Processes.

ACME TIMELINE



ACME TIMELINE



STORY BEHIND OUR LOGO



- ▲ Our shape comes from the letter A of the word Acme.
- ▲ The intention to stride to the topmost point and we have our rocket, which, against all its odds, flies against gravity to the farthest point.
- ▲ Then comes shedding of old ideologies to become lighter, to be able to thrive & to be future ready.
- ▲ Little space below the symbol is for the ideas to keep flowing freely, from any designation level.
- ▲ Thus – Acme Creation Pvt Ltd.

ACME CORE VALUES



Quality



Professionalism



Commitment



On-Time Delivery

CORE TEAM



Linkedin Profile: /Amitkansal

AMIT KANSAL

Founder at Acme Creation Pvt. Ltd.

- ▲ Certification from Indian Institute of Management, Ahmedabad.
- Entrepreneurship development, Young Entrepreneurs Programme, Interpersonal Effectiveness & Team Building, HR Auditing.
- ▲ Certification from LMI India for Effective Personal Productivity & Effective Sales Strategy
- ▲ 4 years internship in Textile Dying & Printing Processing Industry.
- ▲ Mechanical Engineer from PES University, Bangalore



Linkedin Profile: /Tanushrishuklakansal

TANUSHRI SHUKLA KANSAL

VP at Acme Creation Pvt. Ltd.

- ▲ Certification from Indian Institute of Management, Ahmedabad.
 - Entrepreneurship Development
- ▲ Dale Carnegie Training on Train the Trainer
- ▲ Certification from LMI India on Effective Sales Strategy & Effective Personal Productivity
- ▲ Founder at Peeple Community Center
- ▲ Founder at Scoopy Scrub Surat
- ▲ M.Sc in Microbiology from Jain University, Bangalore

ACME TEAM



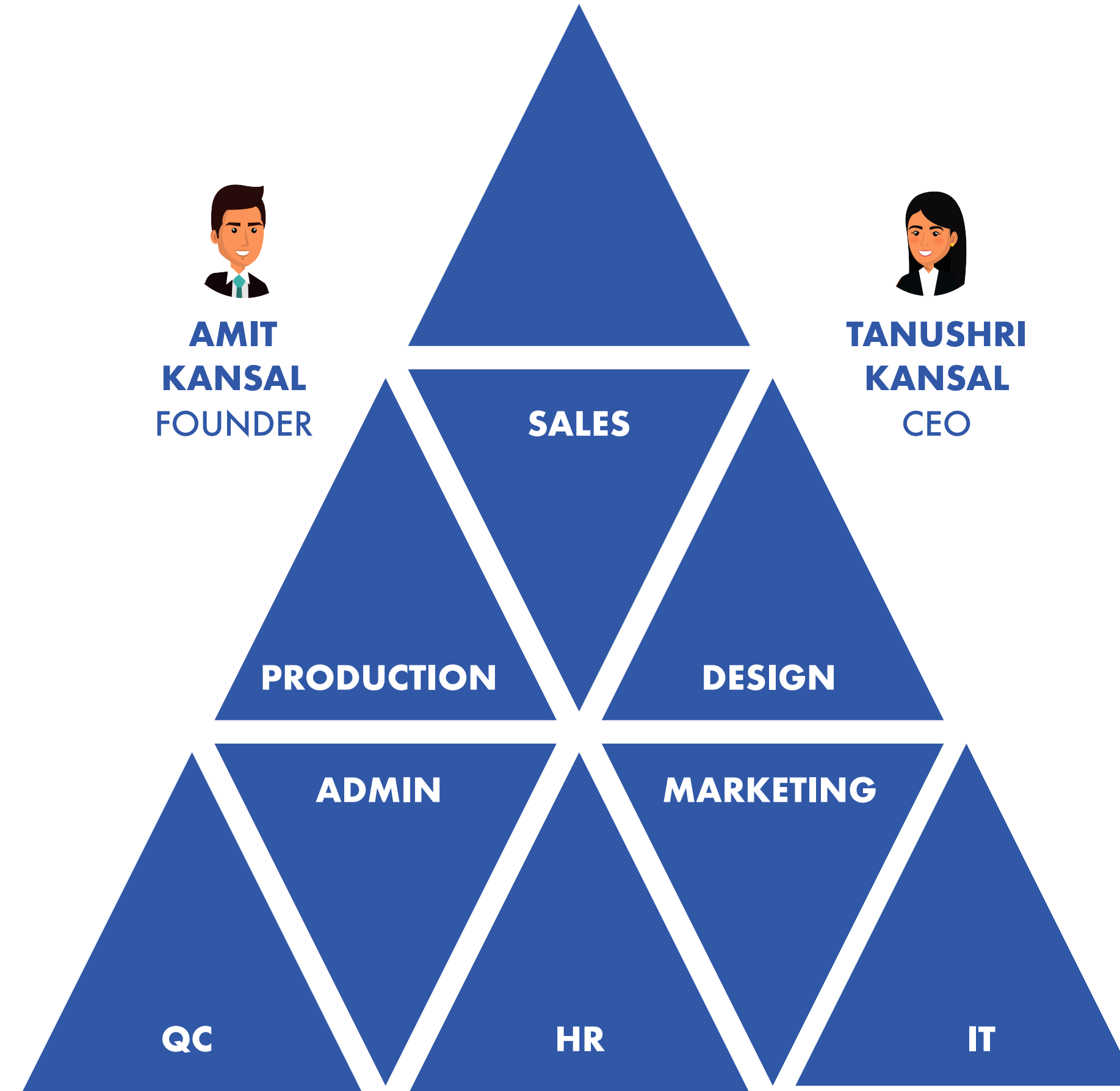
ASHOK KANSAL (MENTOR)



**AMIT
KANSAL
FOUNDER**



**TANUSHRI
KANSAL
CEO**



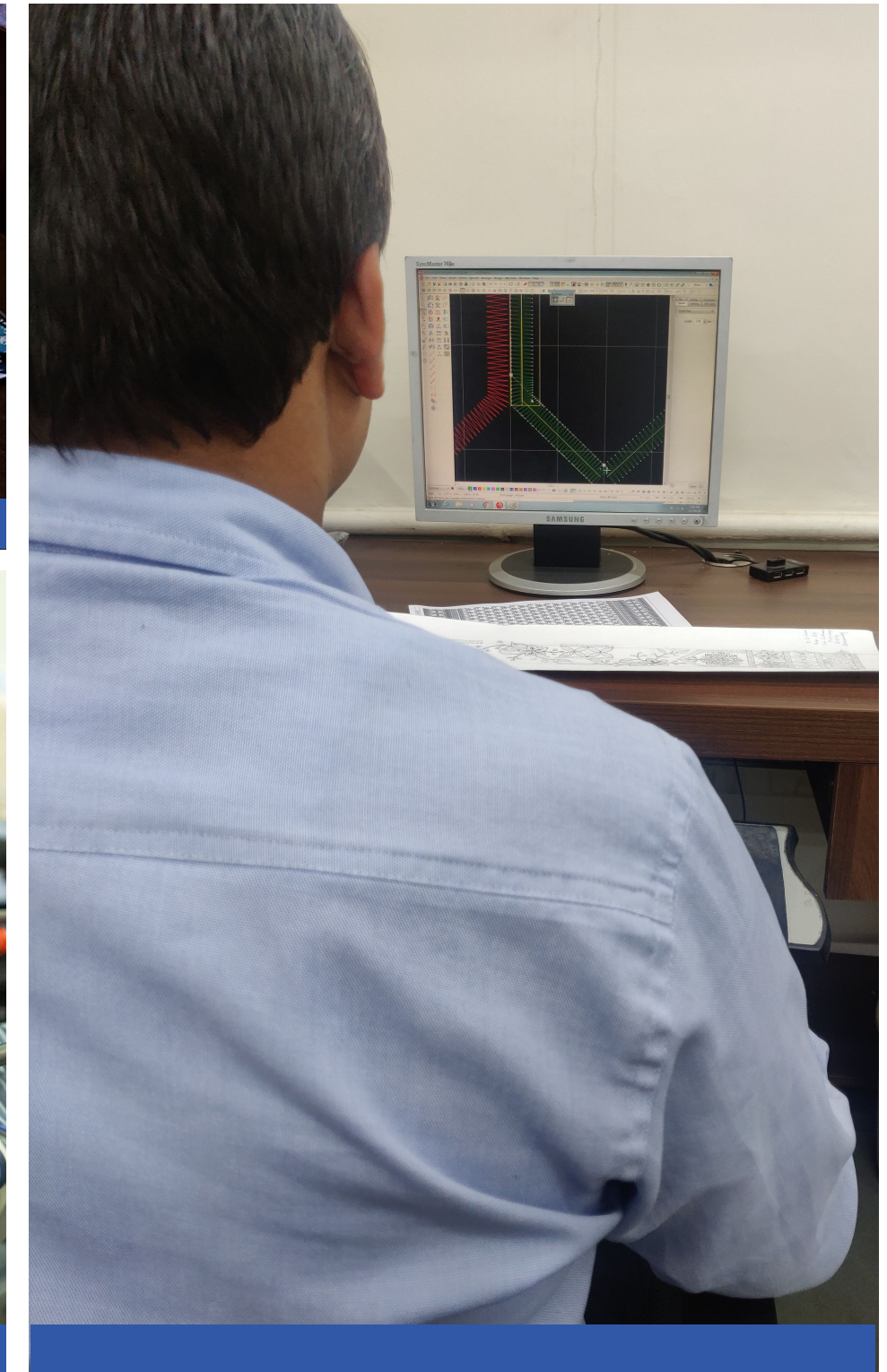
CUSTOMER IS OUR PRIORITY



- ▲ CRM System
- ▲ Quick Response
- ▲ Ability to Track Orders
- ▲ 5-STAR Google Rating
- ▲ Complaint Redressal System
- ▲ Social Media Presence

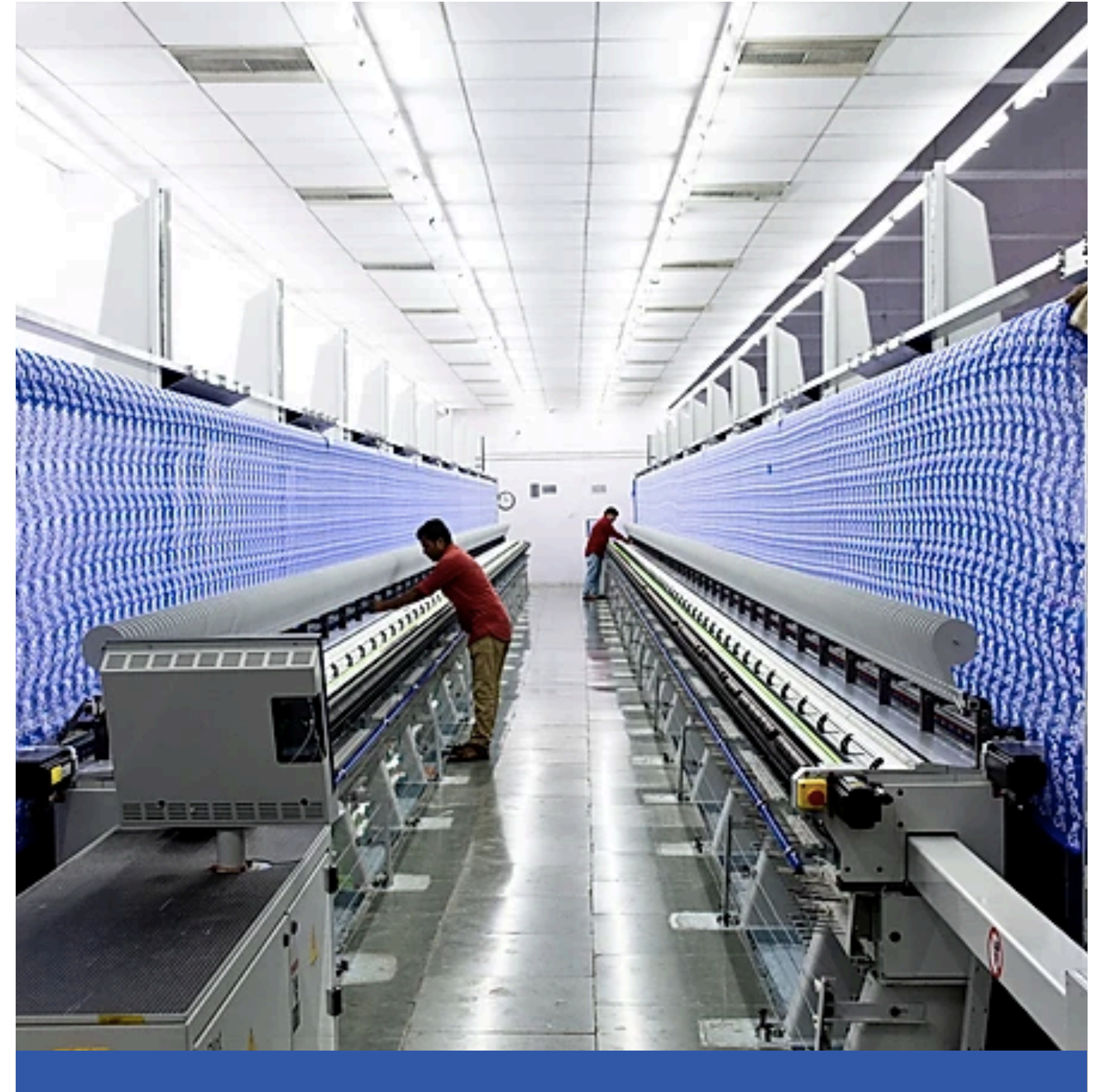
Design Process

- ▲ Reference Swatch/Inspiration
- ▲ Sketch Development
- ▲ Punching/Design in an advanced software on computer by our well-trained team.
- ▲ Sampling Prototype
- ▲ Panel Discussion and Product Review
- ▲ Final Sample from Sampling Machine
- ▲ Approval from Clients



PRODUCTION

- ▲ World Class Schiffli **LÄSSER**⁺ machine
Swiss Embroidery Machines
Imported from Switzerland
- ▲ Qualified & Competent Man-Power
- ▲ 24/7 Operations
- ▲ Best Quality Raw Material
- ▲ Production Capacity -
100 crores Stitches/Annually.



QUALITY COMMITMENT

- ▲ Quality Control System for Incoming Material
- ▲ In-process Inspection System
- ▲ Finished Goods Inspection System
- ▲ Pre-dispatched Inspection



APPLICATION OF SCHIFFLI





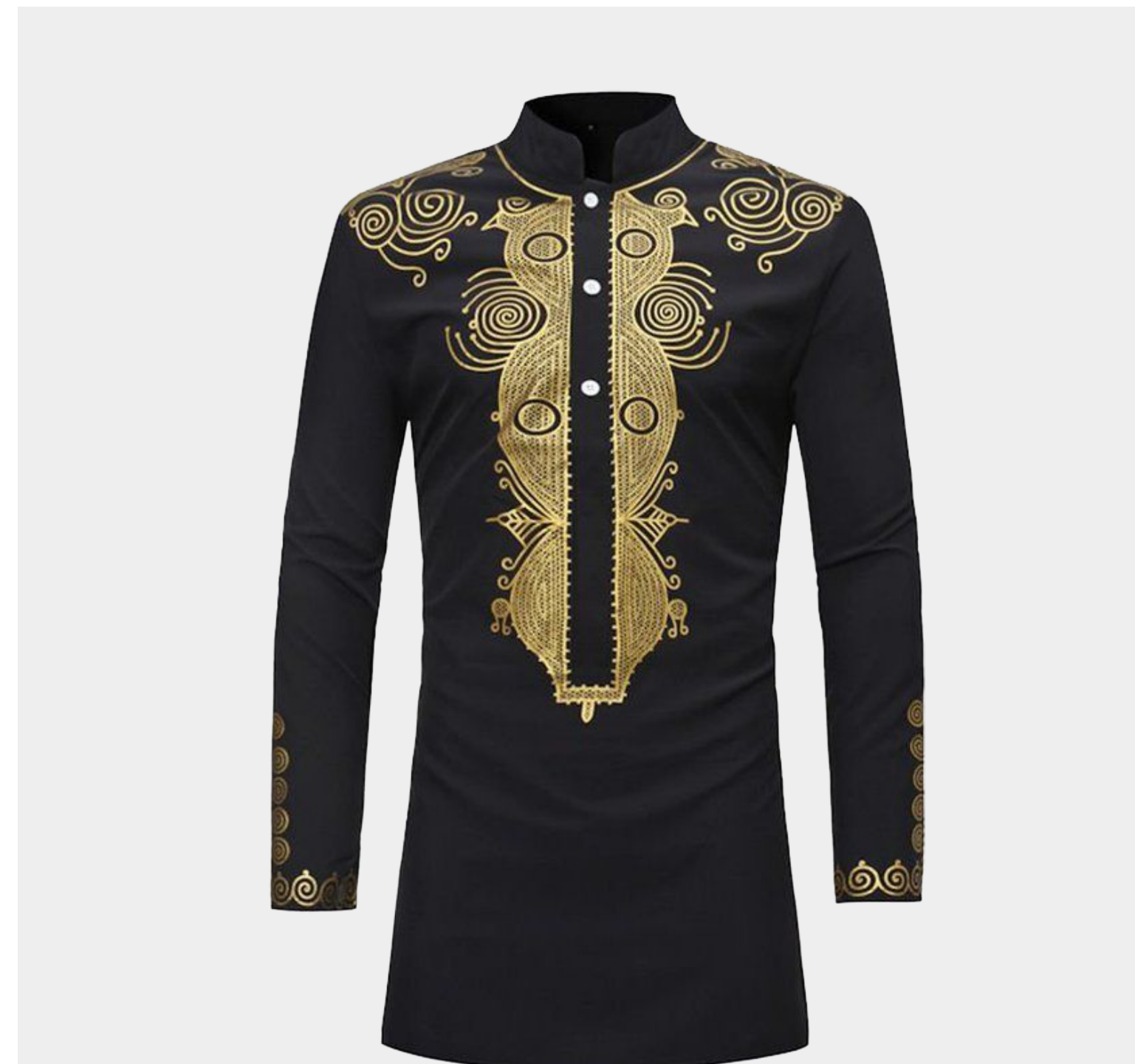
WOMEN WESTERN WEAR



ETHNIC WEAR: KURTI, LEHenga, SAREE



KIDS WEAR



MENS WEAR



PILLOW COVER



HOME FURNISHING

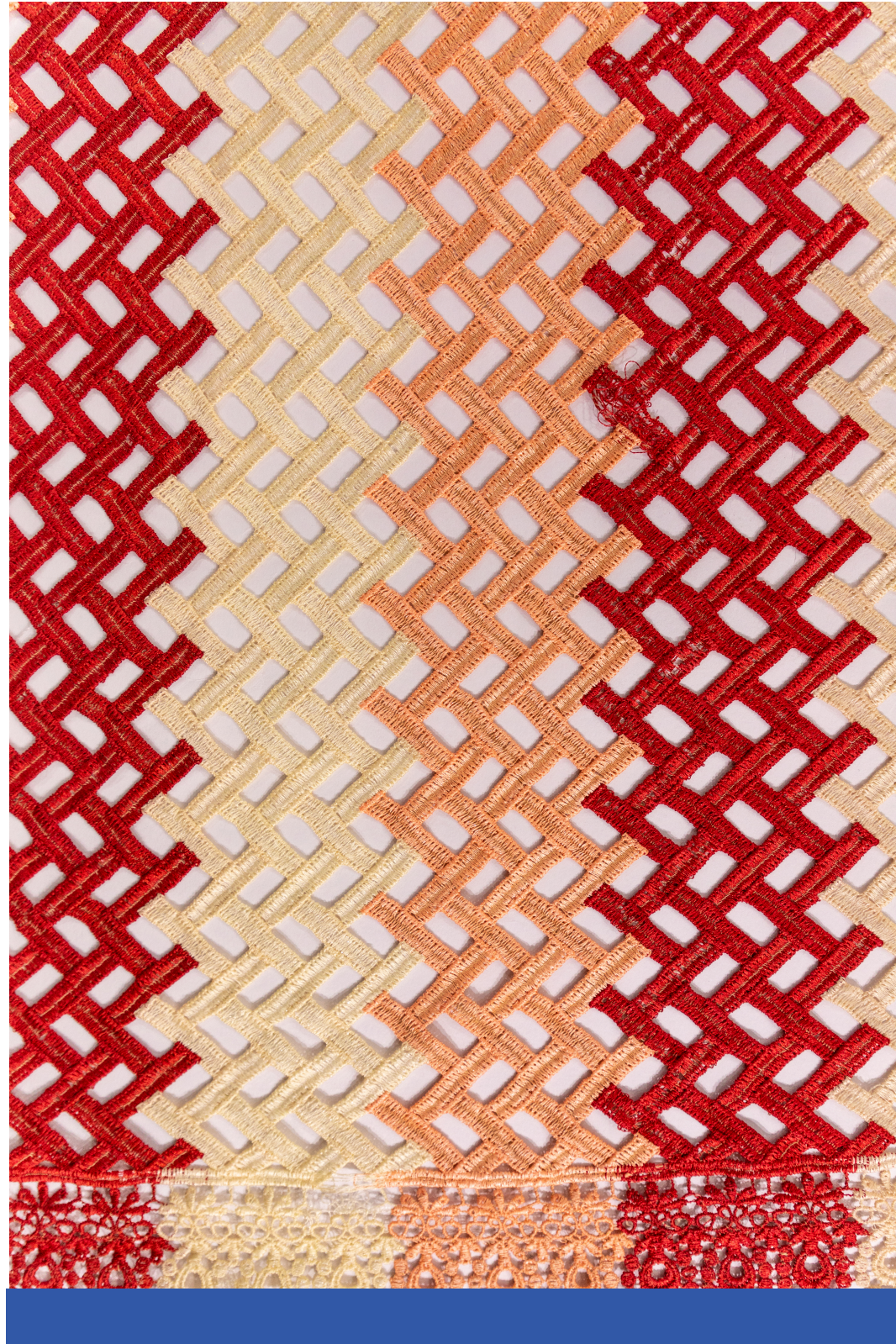


BEACH WEAR



ACCESSORIES

PRODUCTS - GPO ALLOVER



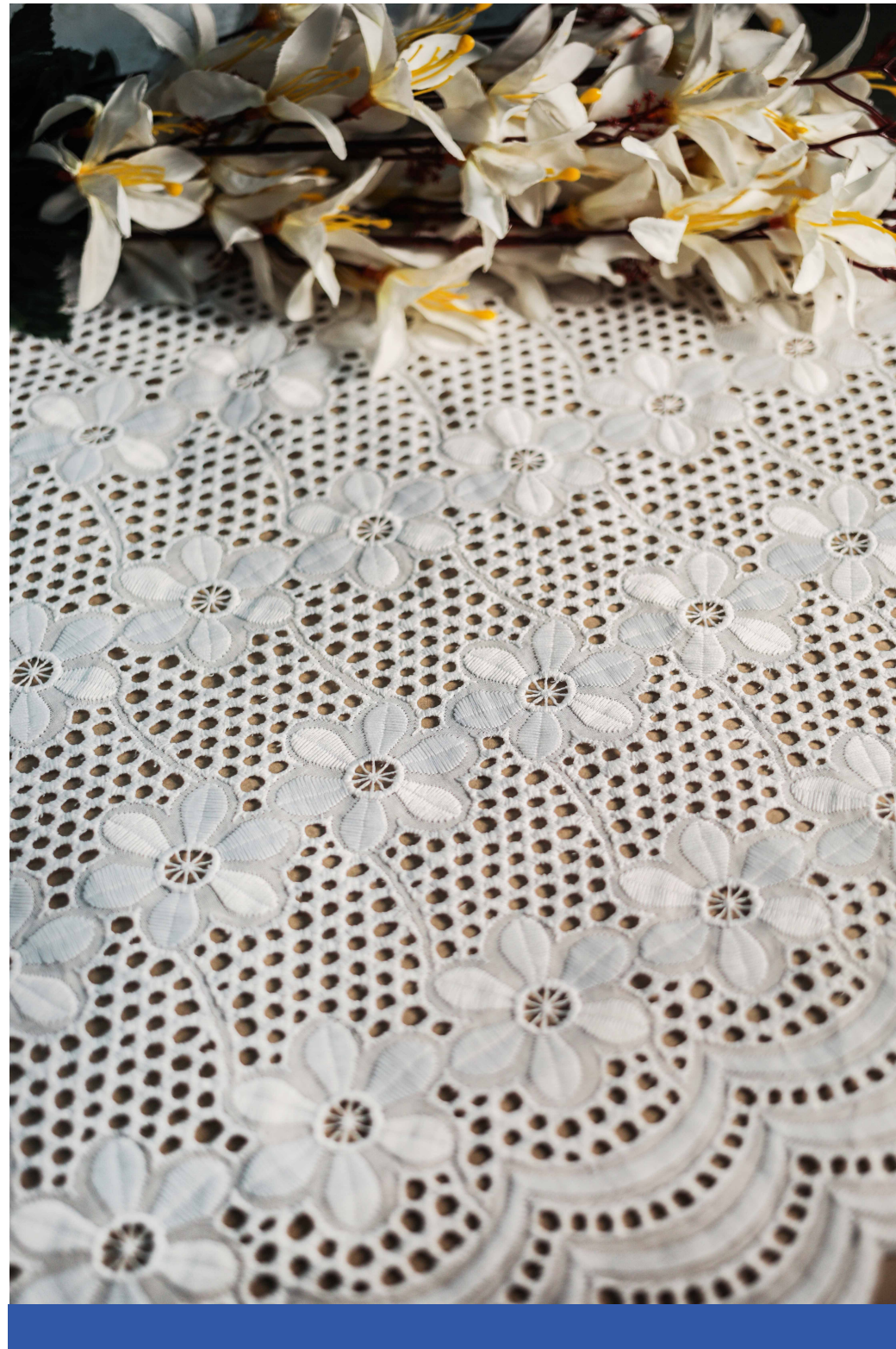
GPO LACES & PATCHES



EMBROIDERY ON NET FABRICS



BORER





EMBROIDERY WITH DIGITAL



SOCIAL PRESENCE



-  Facebook Profile: [/acmecreation](#)
-  Instagram Profile: [@acmecreation](#)
-  LinkedIn Business Page: [/acmecreation](#)



GOOD REFERRAL



- ▲ Customer Turnover Above 25 crores+
- ▲ Minimum Order Value of 5,00,000 INR
- ▲ Present in textile trade for above 5 years
- ▲ Not a first timer for embroidery
- ▲ Customers who believe in building long term relationship

- ▲ Textile Traders
- ▲ Garment Manufacturers
 - Delhi/NCR, Bangalore, Tirupur, Kolkata
- ▲ Textile Exporters
- ▲ Textile Export Agents
- ▲ Connect in Continents
 - Asia - Cambodia, Indonesia, Thailand, Myanmar, Dubai, Vietnam, Laos, Srilanka, UAE
 - West Africa - Nigeria, Ghana, Benin, Togo, Mali
- ▲ Garment Manufacturer Supplier to Domestic Brands -
 - Reliance Trends, Westside, Shoppers Stop, Desi Global, etc

THANK YOU

Acme Creation Pvt. Ltd.,
Plot No. 58/2, Bhestan, Opp. Navin Fluorine,
Surat Navsari Road,
Surat 395023,
Gujarat, India

M: 91 99782 68686
91 99255 98939, 91 96877 10003
E : acme_creation@yahoo.com
W : www.acmecreation.in